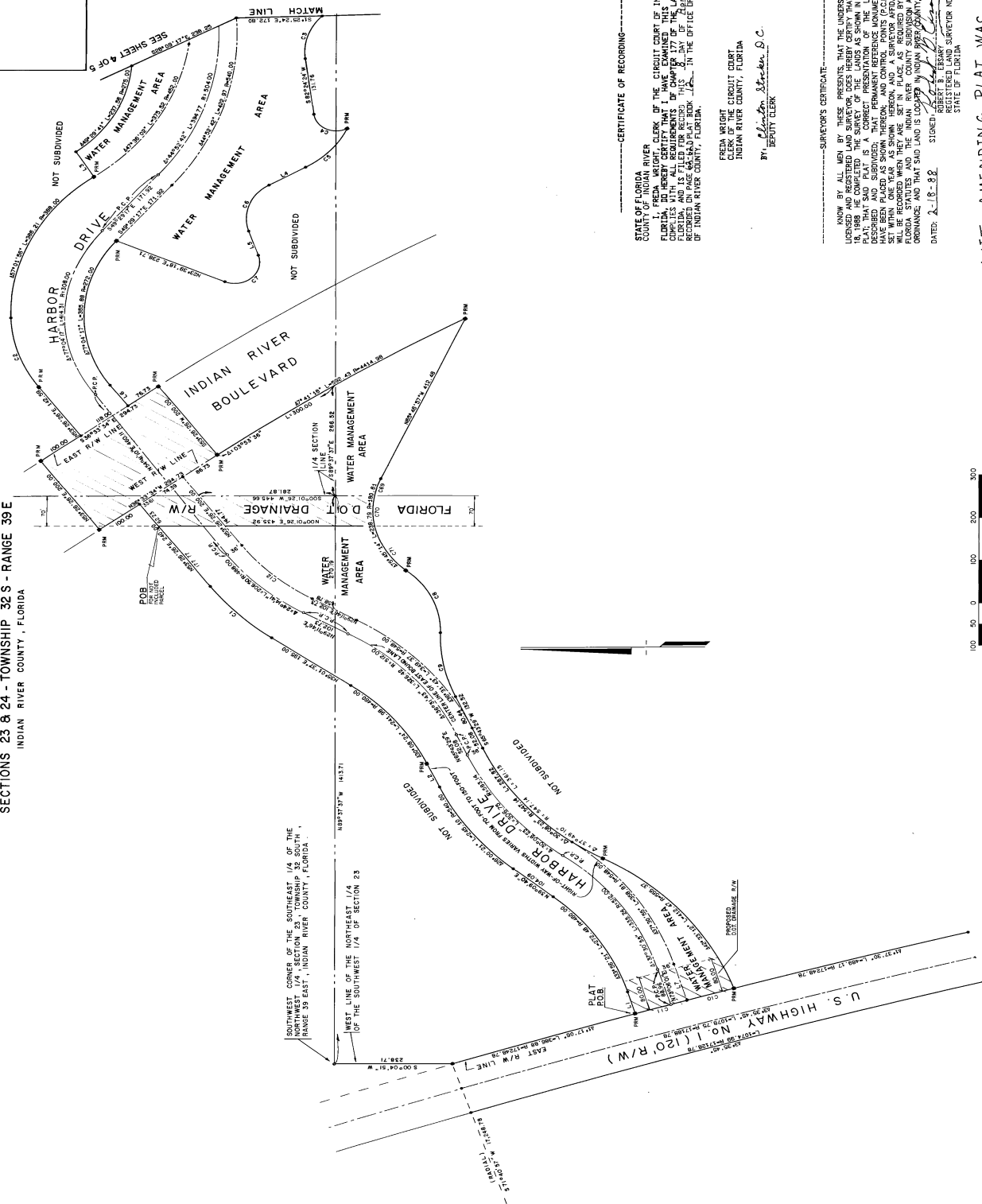


PLAT BOOK 12 PAGE 628
DOCKET NO. 546314

A PLANNED RESIDENTIAL DEVELOPMENT

IN
SECTIONS 23 & 24 - TOWNSHIP 32 S - RANGE 39 E

INDIAN RIVER COUNTY, FLORIDA



CERTIFICATE OF RECORDING—

STATE OF FLORIDA
COUNTY OF INDIAN RIVER
JACK BRIGGS, CLERK OF THE CIRCUIT COURT OF INDIAN RIVER COUNTY, FLORIDA, REQUESTS THAT I HAVE MADE THIS CLAT AND THAT IT COMPLIES WITH ALL REQUIREMENTS OF CHAPTER 37 OF THE STATUTES OF FLORIDA, AND IS FILED FOR RECORD. THIS CASE WAS RECORDED ON PAGE 64-642 PLAT BOOK 122. IN THE OFFICE OF THE CIRCUIT COURT OF INDIAN RIVER COUNTY, FLORIDA.

FREDA WRIGHT
CLERK OF THE CIRCUIT COURT
INDIAN RIVER COUNTY, FLORIDA

BY: Clinton Stoker D.C.
DEPUTY CLERK

-SURVEYOR'S CERTIFICATE--

KNOW BY ALL MEN BY THESE PRESENTS, THAT THE UNDERSIGNED, BEING A LICENSED AND REGISTERED LAND SURVEYOR, DOES HEREBY CERTIFY THAT ON FEBRUARY 18, 1988 HE COMPLETED THE SURVEY OF THE LANDS AS SHOWN IN THE FOREGOING PLAT; THAT SAID PLAT IS A CORRECT PRESENTATION OF THE LANDS HEREIN SHOWN; THAT SAID PLAT IS A TRUE AND PERMANENT REFERENCE MONUMENT (P.R.M.) AND HAS BEEN PLACED AS SUCH, THEREIN, IN THE PRESENCE OF TWO (2) WITNESSES, SET WITHIN ONE YEAR AS SHOWN HEREON, AND THE SURVEYOR AWAREFUL OF RECORDING SAID PLAT IN ACCORDANCE WITH THE REQUIREMENTS OF CHAPTER 177, FLORIDA STATUTES, AND THAT SAID LAND IS LOCATED IN INDIAN RIVER COUNTY, FLORIDA.

DATED: 2-18-88
 SIGNED: Robert B. Ebsary
 ROBERT B. EBSARY
 REGISTERED LAND SURVEYOR NO 1164
 STATE OF FLORIDA

AFETDAVIT AMENDING PLAT WAS

FILED AUGUST 9, 1988

FILED 1/10/2019
OR BOOK 806 PAGE 391

SHEET 3 OF 5

GRAND HARBOR - PLAT I

A PLANNED RESIDENTIAL DEVELOPMENT

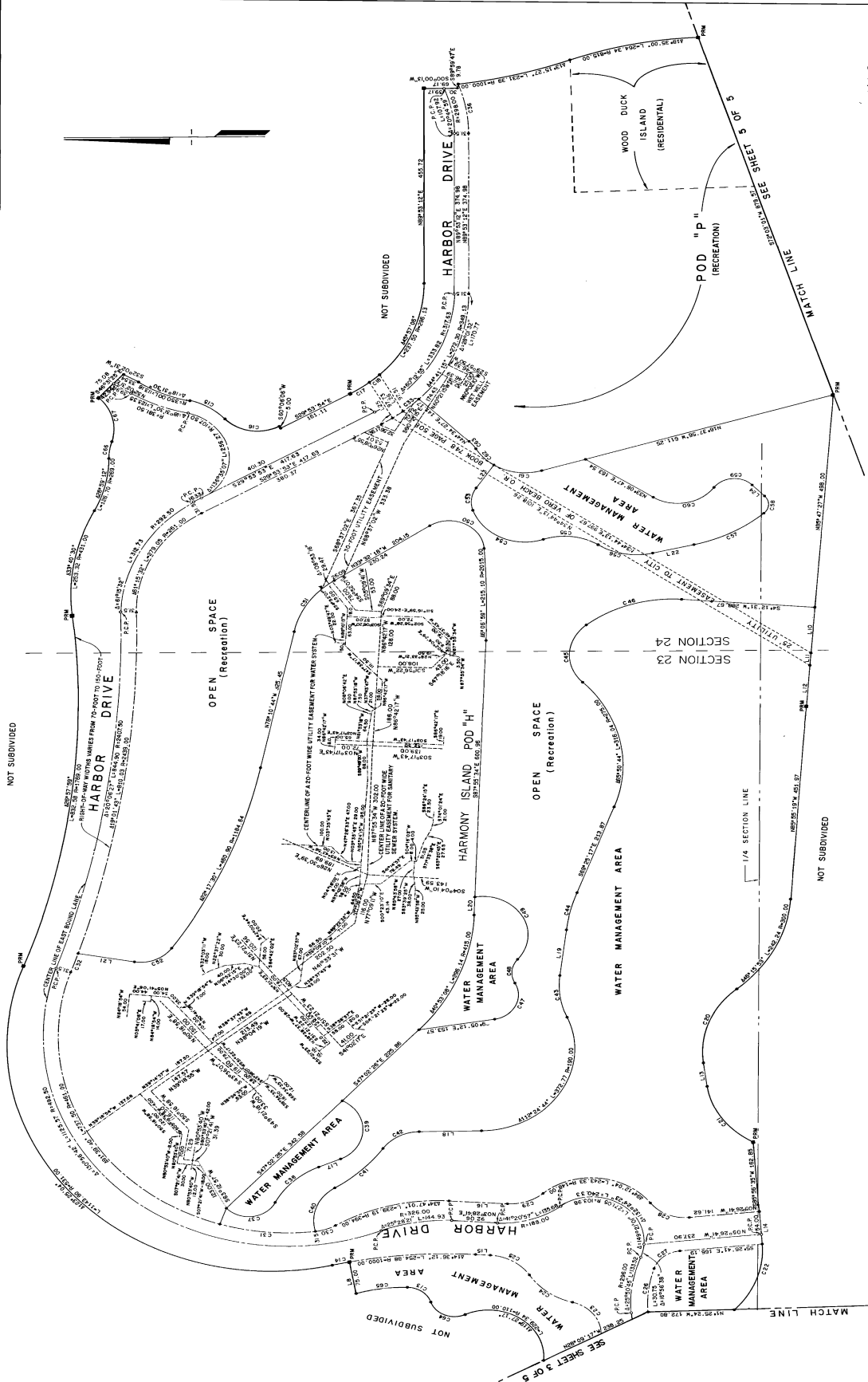
IN

SECTIONS 23 & 24 - TOWNSHIP 32 S - RANGE 39 E

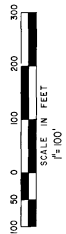
INDIAN RIVER COUNTY, FLORIDA

PLAT BOOK 12 PAGE 62 C

DOCKET NO. 546314

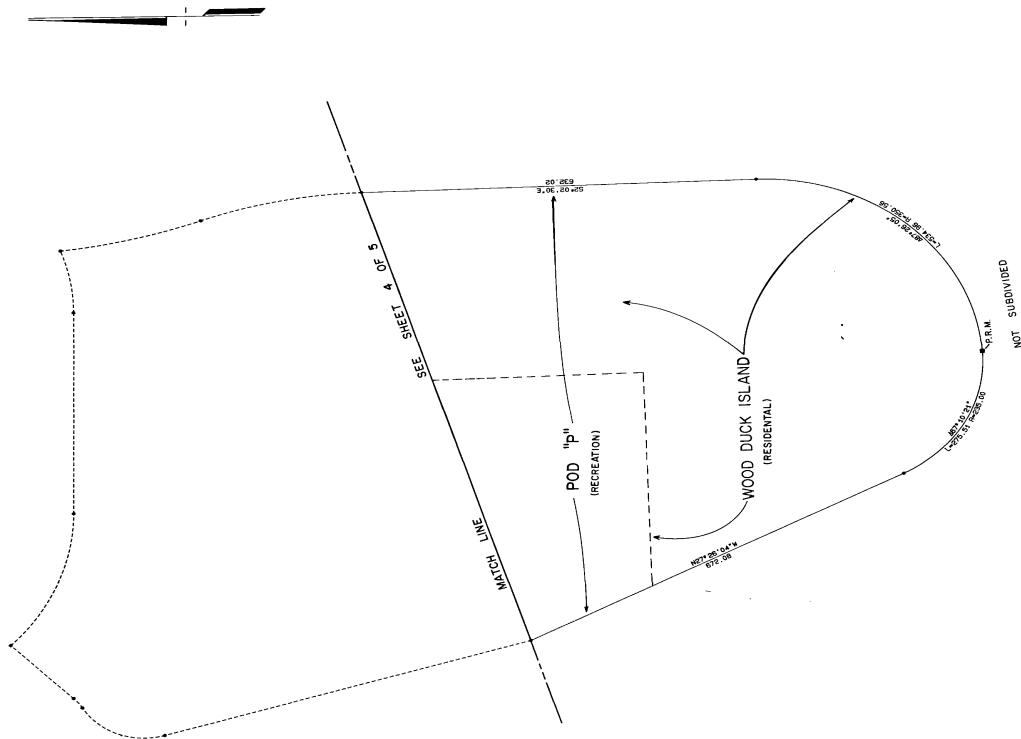


NOTE: CURVE AND LINE TABLES ARE LOCATED ON SHEET 5115



AFFIDAVIT AMENDING PLAT WAS
FILED AUGUST 9, 1988
OR BOOK 806 PAGE 391

GRAND HARBOR - PLAT I
A PLANNED RESIDENTIAL DEVELOPMENT
SECTIONS 23 & 24 - TOWNSHIP 32S - RANGE 39E
INDIAN RIVER COUNTY, FLORIDA



No.	CURVE TABLE			CHORD BEARING	DELTA
	RADIUS	LENGTH	CHORD		
C1	544.08	173.85	171.17	N 44°11'00" E	18°24'50"
C2	286.88	173.85	171.17	N 77°47'55" E	34°42'39"
C3	123.00	108.71	105.03	N 71°38'27" V	31°54'19"
C4	200.00	25.57	123.32	N 72°52'15" E	13°25'15"
C5	91.00	124.75	115.00	N 47°36'01" V	33°38'23"
C6	182.17	157.13	161.35	N 69°19'25" V	79°25'09"
C7	248.78	158.23	192.98	N 64°45'01" V	82°34'54"
C8	17.00	188.00	108.00	N 78°22'35" E	83°18'55"
C9	425.00	93.05	89.94	N 14°51'11" E	100°21'31"
C10	103.00	35.00	35.00	N 34°11'35" E	71°17'34"
C11	183.00	112.73	103.78	N 35°10'27" V	73°27'47"
C12	286.13	46.83	46.78	N 34°25'44" E	89°03'40"
C13	103.00	85.79	85.79	N 54°51'13" V	95°01'38"
C14	103.00	193.38	185.14	N 69°48'53" V	39°18'54"
C15	200.00	168.64	123.67	N 69°52'23" V	48°22'13"
C16	103.00	111.86	101.53	N 56°23'23" V	82°29'43"
C17	103.00	91.22	91.22	N 30°57'02" V	94°16'27"
C18	103.00	102.95	102.89	N 89°01'23" E	22°41'12"
C19	103.00	86.15	86.15	N 23°55'07" E	89°43'29"
C20	103.00	77.49	75.57	N 18°43'18" V	44°23'37"
C21	461.00	195.82	195.43	N 52°14'41" E	24°05'21"
C22	249.00	48.53	45.53	N 51°35'12" E	19°31'44"
C23	249.00	48.53	45.53	N 51°35'12" E	19°31'44"
C24	329.50	117.80	117.17	N 75°38'42" E	20°28'55"
C25	459.00	116.84	116.84	N 75°38'42" E	20°28'55"
C26	173.00	173.00	173.00	N 97°41'29" V	111°34'00"
C27	123.00	123.00	123.00	N 97°41'29" V	111°34'00"
C28	123.00	117.18	109.08	N 68°21'40" E	130°13'25"
C29	123.00	117.18	109.08	N 68°21'40" E	130°13'25"
C30	123.00	117.18	109.08	N 68°21'40" E	130°13'25"
C31	123.00	117.18	109.08	N 68°21'40" E	130°13'25"
C32	123.00	117.18	109.08	N 68°21'40" E	130°13'25"
C33	123.00	117.18	109.08	N 68°21'40" E	130°13'25"
C34	123.00	117.18	109.08	N 68°21'40" E	130°13'25"
C35	123.00	117.18	109.08	N 68°21'40" E	130°13'25"
C36	123.00	117.18	109.08	N 68°21'40" E	130°13'25"
C37	123.00	117.18	109.08	N 68°21'40" E	130°13'25"
C38	123.00	117.18	109.08	N 68°21'40" E	130°13'25"
C39	123.00	117.18	109.08	N 68°21'40" E	130°13'25"
C40	123.00	117.18	109.08	N 68°21'40" E	130°13'25"
C41	123.00	117.18	109.08	N 68°21'40" E	130°13'25"
C42	123.00	117.18	109.08	N 68°21'40" E	130°13'25"
C43	123.00	117.18	109.08	N 68°21'40" E	130°13'25"
C44	123.00	117.18	109.08	N 68°21'40" E	130°13'25"
C45	123.00	117.18	109.08	N 68°21'40" E	130°13'25"
C46	123.00	117.18	109.08	N 68°21'40" E	130°13'25"
C47	123.00	117.18	109.08	N 68°21'40" E	130°13'25"
C48	123.00	117.18	109.08	N 68°21'40" E	130°13'25"
C49	123.00	117.18	109.08	N 68°21'40" E	130°13'25"
C50	123.00	117.18	109.08	N 68°21'40" E	130°13'25"
C51	123.00	117.18	109.08	N 68°21'40" E	130°13'25"
C52	123.00	117.18	109.08	N 68°21'40" E	130°13'25"
C53	123.00	117.18	109.08	N 68°21'40" E	130°13'25"
C54	123.00	117.18	109.08	N 68°21'40" E	130°13'25"
C55	123.00	117.18	109.08	N 68°21'40" E	130°13'25"
C56	123.00	117.18	109.08	N 68°21'40" E	130°13'25"
C57	123.00	117.18	109.08	N 68°21'40" E	130°13'25"
C58	123.00	117.18	109.08	N 68°21'40" E	130°13'25"
C59	123.00	117.18	109.08	N 68°21'40" E	130°13'25"
C60	123.00	117.18	109.08	N 68°21'40" E	130°13'25"
C61	123.00	117.18	109.08	N 68°21'40" E	130°13'25"
C62	123.00	117.18	109.08	N 68°21'40" E	130°13'25"
C63	123.00	117.18	109.08	N 68°21'40" E	130°13'25"
C64	123.00	117.18	109.08	N 68°21'40" E	130°13'25"
C65	123.00	117.18	109.08	N 68°21'40" E	130°13'25"
C66	123.00	117.18	109.08	N 68°21'40" E	130°13'25"
C67	123.00	117.18	109.08	N 68°21'40" E	130°13'25"
C68	123.00	117.18	109.08	N 68°21'40" E	130°13'25"
C69	123.00	117.18	109.08	N 68°21'40" E	130°13'25"
C70	123.00	117.18	109.08	N 68°21'40" E	130°13'25"
C71	123.00	117.18	109.08	N 68°21'40" E	130°13'25"

LINE TABLE	NO.	BEARING	DISTANCE
L1	L1	N 75°45'10" E	59.37
L2	L2	N 62°15'01" E	60.00
L3	L3	N 58°15'15" E	69.00
L4	L4	N 54°15'15" E	78.00
L5	L5	N 50°15'15" E	87.00
L6	L6	N 46°15'15" E	96.00
L7	L7	N 42°15'15" E	105.00
L8	L8	N 38°15'15" E	114.00
L9	L9	N 34°15'15" E	123.00
L10	L10	N 30°15'15" E	132.00
L11	L11	N 26°15'15" E	141.00
L12	L12	N 22°15'15" E	150.00
L13	L13	N 18°15'15" E	159.00
L14	L14	N 14°15'15" E	168.00
L15	L15	N 10°15'15" E	177.00
L16	L16	N 6°15'15" E	186.00
L17	L17	N 2°15'15" E	195.00
L18	L18	N 0°15'15" E	204.00
L19	L19	N 34°15'15" E	213.00
L20	L20	N 38°15'15" E	222.00
L21	L21	N 42°15'15" E	231.00
L22	L22	N 46°15'15" E	240.00
L23	L23	N 50°15'15" E	249.00
L24	L24	N 54°15'15" E	258.00
L25	L25	N 58°15'15" E	267.00
L26	L26	N 62°15'15" E	276.00

AFFIDAVIT AMENDING PLAT WAS
FILED AUGUST 9, 1988
OR BOOK 806 PAGE 391